

# Fall 2023 Funding Intake

Info Session

A large orange triangle in the bottom-left corner of the slide.

# Topics for Today

1. Speaker introductions
2. Housekeeping (intro in chat & mute mics)
3. ETSI-BC: who we are and who we serve
4. Program information
5. Application tips
6. Criteria for decision making
7. Timelines
8. Q&A

# Land Acknowledgment

We'd like to start by acknowledging that this meeting is being hosted on the homelands of the Sylix/Okanagan people.

The ETSI-BC service area includes 33 First Nations Communities, belonging to the Ktunaxa, Nlaka'pamux, Secwépemc, Sinixt, Stó:lō and Sylix/Okanagan Nations.

We also recognize the 14 Chartered Métis Communities in our service area.

We are grateful to live, work and play on this land.



**Strong economy  
Stronger communities**

# About ETSI-BC

# Our Mandate

ETSI-BC is a catalyst in strengthening and diversifying the economy of the BC Southern Interior.

We help communities to realize their economic development aspirations by providing funding, resources and knowledge.

# History and Structure

- 2006 - Created by the Province of BC
- April 2021 – Re-Launched as ETSI-BC, the Economic Trust of the Southern Interior
- Governance
  - 2 Regional Advisory Committees (RACs):  
Local elected officials from Thompson-Okanagan & Columbia-Kootenay regions
  - Board: 8 elected officials, 5 provincial appointees

# Who we Serve

Total population ~760,000

Areas included:

- 9 Regional Districts\*
- 53 Municipalities
- 33 First Nations
  - 27 in Thompson-Okanagan RAC
  - 6 in Columbia-Kootenay RAC

\* 7 full RDs plus part of the TNRD and FVRD

## ETSI-BC Service Area





# Equity Across our Service Area



Economic Trust of  
the Southern Interior

## Thompson-Okanagan

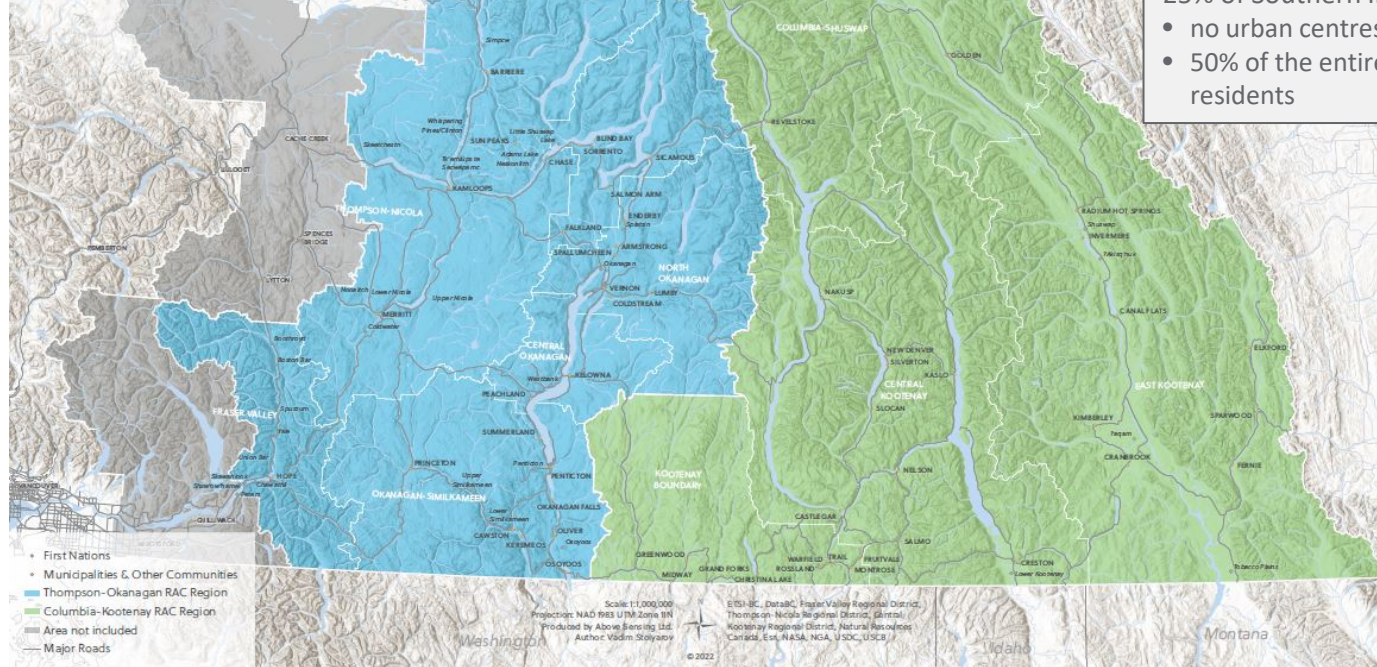
75% of Southern Interior population

- 100% of our urban residents (5 cities)
- 50% of the entire region's rural residents

## Columbia-Kootenay

25% of Southern Interior population

- no urban centres (>25K residents)
- 50% of the entire region's rural residents





# Our Strategic Pillars



**BUILDING**  
Economic  
Development  
Capacity



**SUPPORTING**  
Business  
Resilience &  
Growth



**INNOVATING**  
& Advancing  
Key Sectors

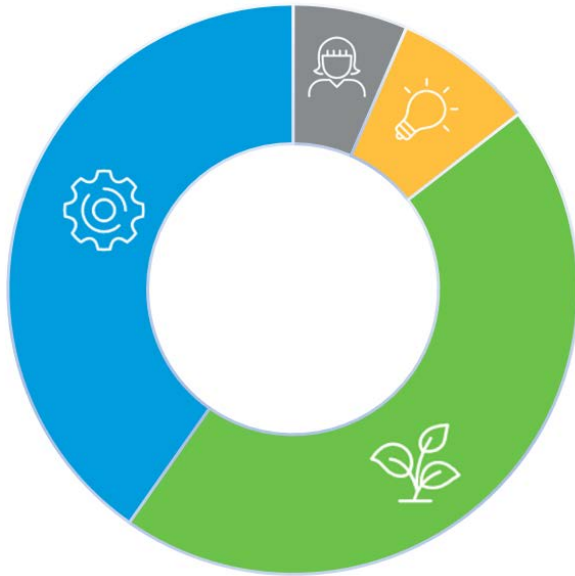


**DEVELOPING**  
Human  
Capital



**CREATING**  
Value for the  
Economic  
Development  
Ecosystem

# Some Highlights



- \$6.5 million in grant funding for >200 projects since April 2021
- Total funding of \$73 million since inception on projects worth \$256 million
- These projects helped create or maintain 20,000+ jobs
- >60% of core funding supported Pillar 1 projects since April 2021

# Our Mandated Focus Sectors\*

- Agriculture
- Economic Development
- Energy, Mining, Transportation
- Forestry
- Small Business
- Tourism/Sport



\* As per our Enabling Legislation, the SIDIT Act



**Strong economy**  
**Stronger communities**

# Fall Funding Intake Details

1. Building Economic Development Capacity
2. Innovating and Advancing Key Sectors

# Requirements for all Applicants

Applicants must:

- Be located in the ETSI-BC service area
- Be financially solvent and current with annual federal and/or provincial filings
- Only receive core funding twice in the previous 4 intakes
- Plus, total funding in one community may not exceed a combined grant total of \$50,000 per intake

*\*These limitations apply to all core funding streams*



# Funding Stream 1 - Objectives



- Enhance the capacity of smaller, rural & First Nations communities to fulfill their ED aspirations and goals
- Support local and regional economic development projects
- Facilitate strategic partnerships and encourage collaboration between communities and CED groups



# Funding Stream 1 - Who can Apply?



**BUILDING**  
Economic  
Development  
Capacity

- Local governments, (municipalities and regional districts) and associated economic organizations
- Registered First Nations Bands and their associated ED corporations, Tribal Councils and Metis organizations
- Non-profit business support organizations
- Industry Associations / Co-operatives
- Accelerators

*\*Applicants must be located in the ETSI-BC service area*

# Project Type: Small Scale

**Purpose: research and planning capacity**

- Max grant \$15,000
- Projects in communities with <5,000 residents are eligible for 100% funding
- Projects in communities with >5,000 residents may receive 50% funding

# Examples of Small-Scale Projects



Economic development planning/research  
*(i.e., community branding, strategic plans, revitalization plans, broadband assessments)*



Business retention/attraction strategies  
*(i.e., business walks, community engagement)*



Business diversification  
*(i.e., supply chain analysis)*



Industry/workforce engagement  
*(i.e., workforce analysis, attraction strategy)*

# Project Type: Large Scale



**BUILDING**  
Economic  
Development  
Capacity

**Purpose: to assess, initiate or implement economic development projects**

- Max grant \$50,000
- Applicants may receive up to 50% funding of project budget
- Applicants must have a financial contribution to the project

# Examples of Large-Scale Projects



## Business Diversification

*(i.e., capital investment analysis; business attraction campaign; labour force attraction campaign)*



## Sector Development

*(i.e., co-working space, food hub, supply chain development, tourism development)*



## Community Revitalization

*(i.e., shop local campaign, downtown beautification program, improve a community-use facility)*

# Collaborative/Regional Projects



**BUILDING**  
Economic  
Development  
Capacity

**Purpose: assess, initiate or implement an economic development projects with regional impact**

- Max grant \$50,000
- Priority given to collaborative projects with First Nations and local/regional governments
- Applicants may receive up to 60% funding of project budget
- Collaborative partners must each contribute financially to the project



# Collaborative/Regional Project Examples

- Business diversification
- Industry sector development
- Labour market attraction
- Major capital investment analysis
- Region-wide business attraction initiative

*Projects must have **regional focus and impact***

# Funding Stream 3 – Objectives



INNOVATING  
& Advancing  
Key Sectors

- Encourage initiatives in support of innovation at regional or sector level
- Improve competitiveness of key industry sectors
- Support creation and growth of industry clusters
- Support initiatives aimed at transitioning to a Net Zero economy
- Support initiatives which focus on reducing environmental impacts

# Funding Stream 3 - Who Can Apply?



INNOVATING  
& Advancing  
Key Sectors

- Economic Development organizations (Indigenous and non-Indigenous)
- Non-profit business support organizations
- Industry Associations
- Co-operative Groups
- Business Accelerators

# Funding Stream 3 - Funding Terms

- Maximum grant \$50,000
- Applicants may receive up to 75% funding of the total project budget
- Applicants must financially contribute at least 25% of the project budget
- In-kind contributions can only be counted towards 10% of project budget
- Priority given to projects with higher leveraging



INNOVATING  
& Advancing  
Key Sectors

# Stream 3 Project Examples



Target industry workforce attraction



Tourism strategic plan



Industry recycling feasibility



Cleantech study



Outdoor gear industry association supply chain study to on-shore manufacturing



Logging industry association member support



Regional agriculture initiatives

# Helpful Tips



# Application Tip 1: *Prepare*

- Read the [Application Guides](#)
- Review the Frequently Asked Questions (FAQs) on our website
- Review the list of funded projects from last year on our website
- Look at the [Stories page](#) of our website for inspiration & ideas

**Please talk to us before starting an application.**



# Application Tip 2: *Rationale*



- Have a clear project rationale –why is your project important?
- Reference prior work, data or studies to support your rationale
- What are the expected economic outcomes?
- Letters of support – not a template
- Need support from the economic development entity in your community, if that is not you

# Application Tip 3: *Metrics & Money*

- Use clear, measurable economic metrics - how do you know the project is successful?
- Identify the number of jobs created and/or maintained by your project
- Leverage from other funders
- Include quotes from contractors/consultants
- Your admin fee can be max 10% of funding
- Budget round numbers (*not \$20,498.36*)



# Application Tip 4: *Project Type/Scope*

- Your project may seem to fit in several project types. If not sure, ask us which application to complete
- Ensure that the project builds capacity – does more than your usual business activities
- No shotgun approach – only submit one application per organization
- Consider whether you can do the project with less funding. If you receive less, what can still be done?



# Application Tip 5: *Workplan*



- Project must start after funding approval
- Any activities prior to funding approval are ineligible for funding
- Use clear key performance indicators
- Specify a final project end date
- Be realistic with your timelines
- Identify the signatory to the project

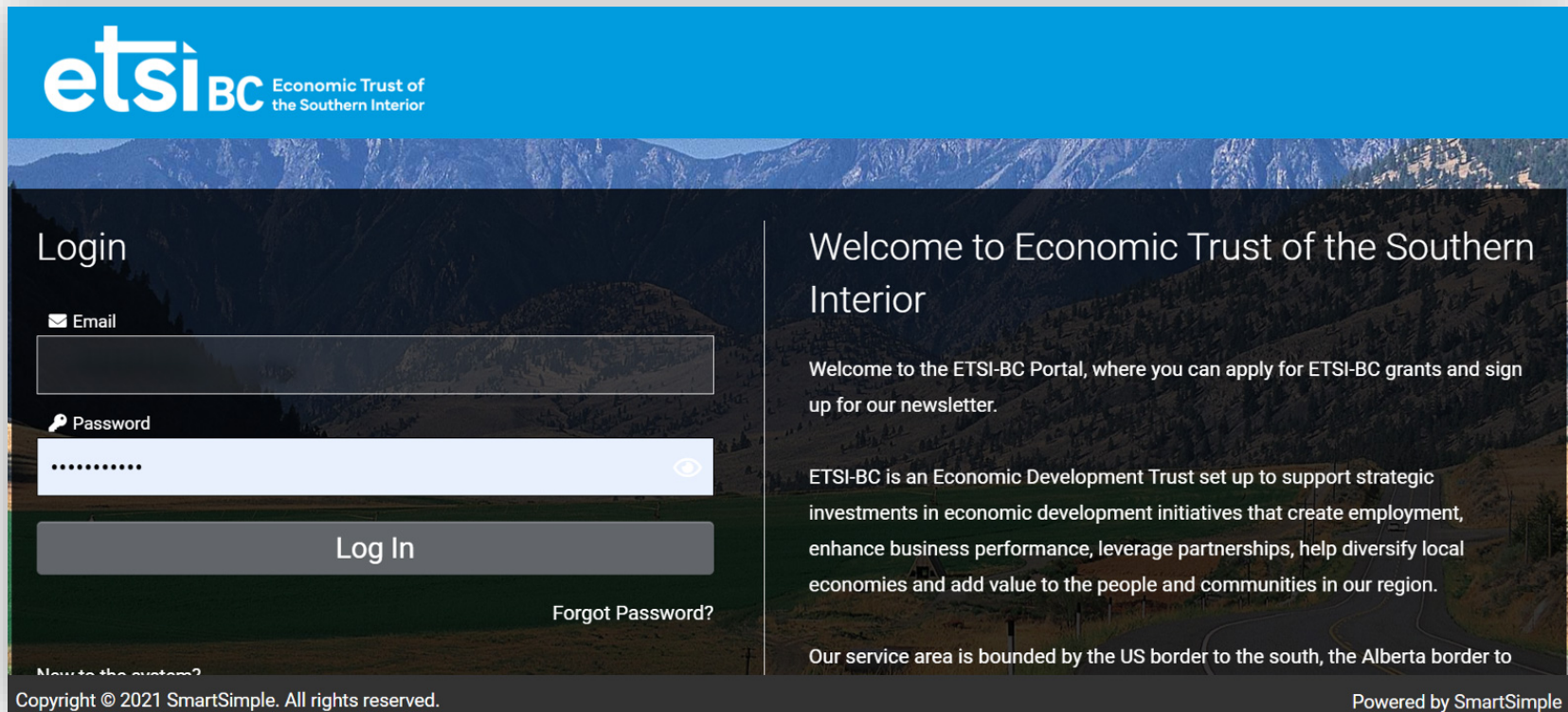


# Other Key Info



# Register on our Grant Application Portal

<https://etsi-bc.smartsimple.ca>



**etsiBC** Economic Trust of the Southern Interior

## Login

✉ Email

🔑 Password

Log In

[Forgot Password?](#)

[New to the system?](#)

## Welcome to Economic Trust of the Southern Interior

Welcome to the ETSI-BC Portal, where you can apply for ETSI-BC grants and sign up for our newsletter.

ETSI-BC is an Economic Development Trust set up to support strategic investments in economic development initiatives that create employment, enhance business performance, leverage partnerships, help diversify local economies and add value to the people and communities in our region.

Our service area is bounded by the US border to the south, the Alberta border to

Copyright © 2021 SmartSimple. All rights reserved. Powered by SmartSimple

# Funding Decisions

1. Evaluation/scoring criteria set by ETSI-BC Board
2. Due diligence by ETSI-BC Grant Team
3. Review and recommendation by ETSI-BC Regional Advisory Committees
4. Approval/conditional approval by CEO

\* Available funding ~\$375,000

# Application / Decision Timelines

September 18

Spring Funding Intake opens

October 18

Funding Intake closes

Oct 19 - Nov 17

Due Diligence/ applicant follow up

Dec 1

RAC review

Dec 4 - 8

Applicants advised

Dec 11 – 22

Contribution Agreements provided

First installment disbursed upon signing

# The ETSI-BC Team



**Laurel Douglas**

Chief Executive Officer  
laurel@etsi-bc.ca



**Mary Beadman**

Program Administrator



**Paul Wiest**

Project Consultant  
CK-RAC Area  
Nelson



**Renata King**

Project Consultant  
TO-RAC Area  
Vernon



**Aleece Laird**

Community Engagement  
Consultant, Kamloops



**Michael Dorsel**

Loan Specialist  
Kelowna



**Jeet Panghali**

Accounting Officer  
Kelowna



# Questions? Who to Contact

## Renata King

Thompson | Okanagan | Shuswap | Nicola | Similkameen | Hope, FVRD A&B

Email: [renata@etsi-bc.ca](mailto:renata@etsi-bc.ca)

Cell: 778-833-1430

## Paul Wiest

Columbia | Kootenay | Boundary

Email: [paul@etsi-bc.ca](mailto:paul@etsi-bc.ca)

Cell: 250-354-8366

# Connect with us!

**LinkedIn**

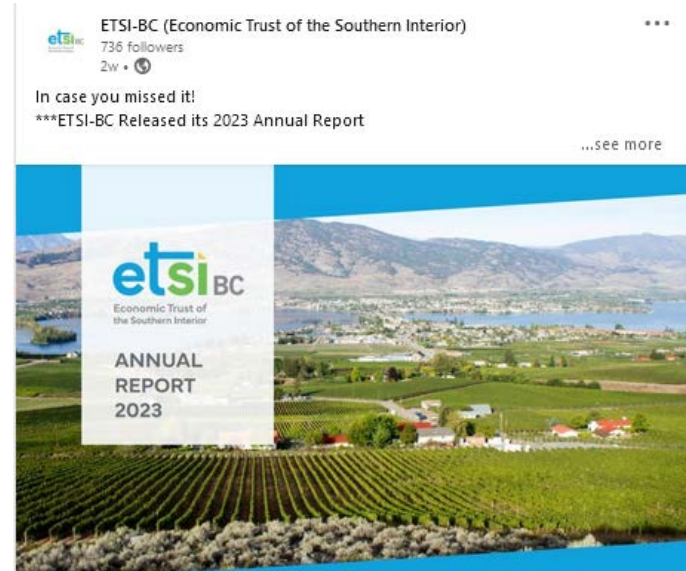
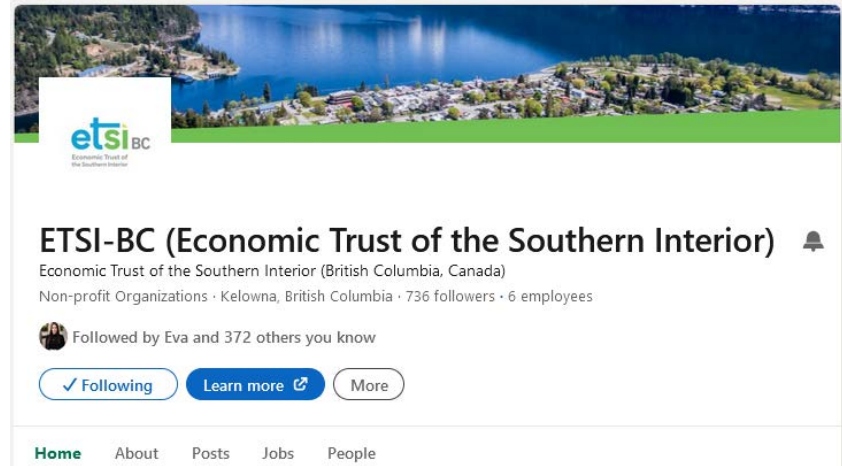
@etsi-bc

**Twitter | X**

@etsi\_bc

**eNews**

www.etsi-bc.ca







**We look forward  
to working with you!**